

## Luminaire Photograph



Light Output Ratio:	70.7%	
Luminaire Power:	15.81 W	
SHR Nominal:	0.50	Calculated using the TM5
SHR Maximum:	0.70	fine grid method.

C Range: 0 - 360DEG  
C Interval: 30.0DEG  
Test Speed: HIGH  
Temperature: 25.3 °C  
Operators: zoe  
Test Date: 2023-11-29

Range: 0 - 180DEG  
Interval: 1.0DEG  
Test System: EVERFINE GO-SPEX500\_V1 SYSTEM V2.00.461  
Humidity: 65.0%  
Test Distance: 3.160m [K=1.0000]  
Remarks: LAMP: BXRE-30G1000-A-83 Ra:90  
LENS: PM-1082B 36R  
DRIVER: PUP20A-1WMC 400mA  
30minutes warm-up

## LUMINOUS INTENSITY DISTRIBUTION DIAGRAM

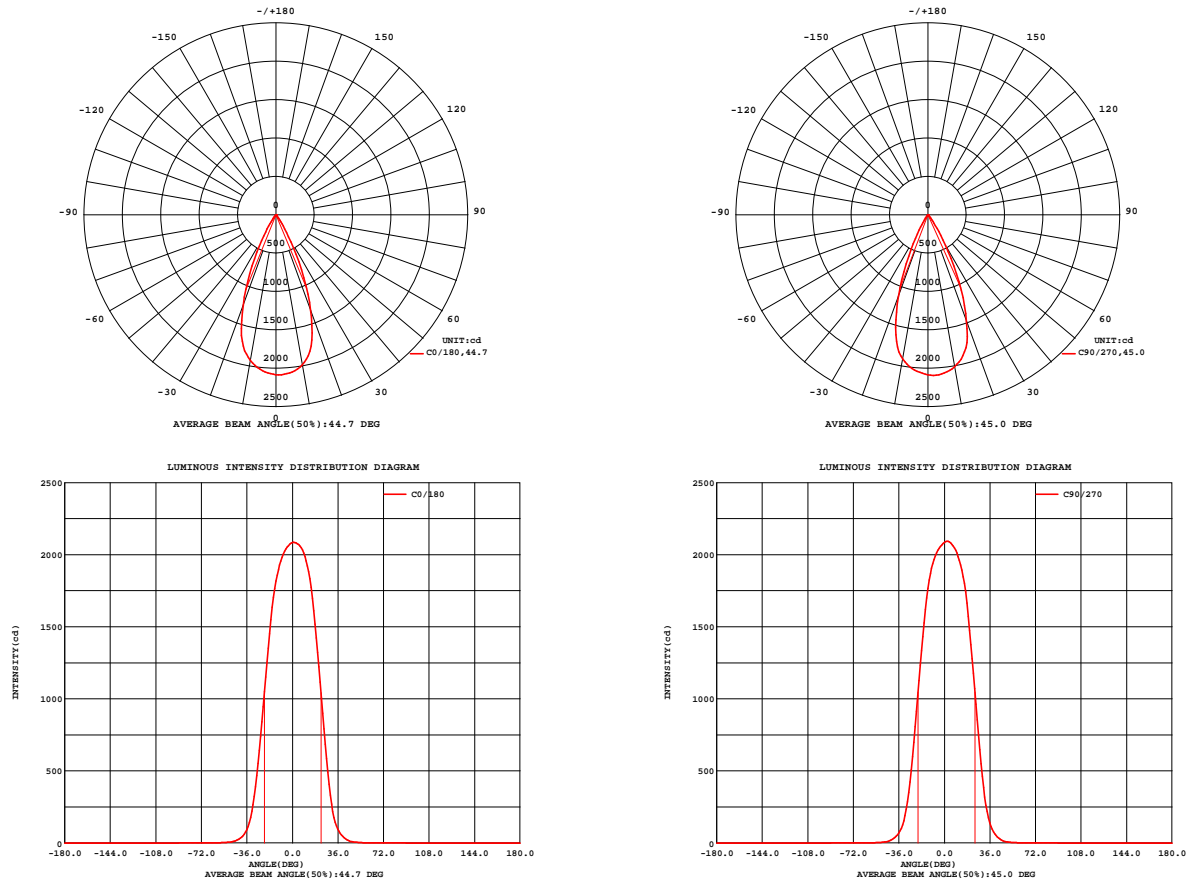


Fig. C0/C180

Fig. C90/C270

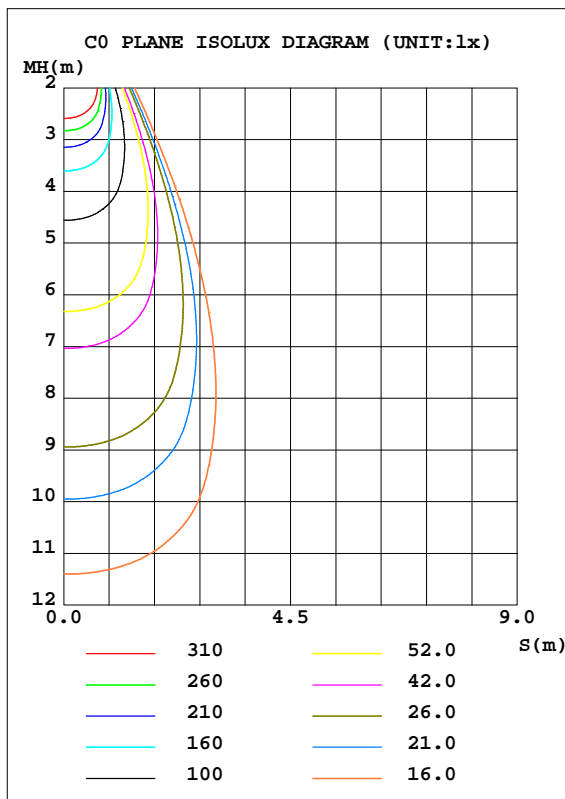
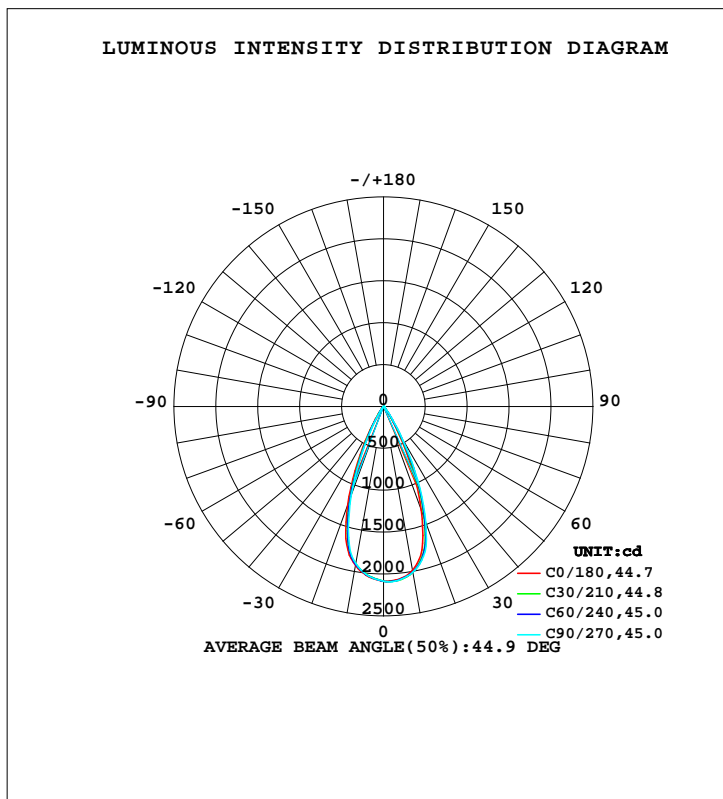
C Range: 0 - 360DEG  
C Interval: 30.0DEG  
Test Speed: HIGH  
Temperature: 25.3 °C  
Operators: zoe  
Test Date: 2023-11-29

Range: 0 - 180DEG  
Interval: 1.0DEG  
Test System: EVERFINE GO-SPEX500\_V1 SYSTEM V2.00.461  
Humidity: 65.0%  
Test Distance: 3.160m [K=1.0000]  
Remarks: LAMP: BXRE-30G1000-A-83 Ra: 90  
LENS: PM-1082B 36R  
DRIVER: PUP20A-1WMC 400mA  
30minutes warm-up

## LUMINAIRE PHOTOMETRIC TEST REPORT

Test:U:120.14V I:0.1325A P:15.808W PF:0.9920 Freq:59.98Hz Lamp Flux:1579.4x1 lm		
NAME: 2318.110-LEA-14(400mA)	TYPE:	WEIGHT:
SPEC.: 3000K	DIM.:	SERIAL No.: 2311291399
MFR.: RISE	SUR.: 0.003737385m2	Shielding Angle:

DATA OF LAMP		PHOTOMETRIC DATA				Eff: 70.63 lm/W
MODEL	Bridgelux	Imax(cd)	2093	S/MH(C0/180)		0.67
NOMINAL POWER(W)	16	LOR(%)	70.7	S/MH(C90/270)		0.64
RATED VOLTAGE(V)	120	TOTAL FLUX(lm)	1116.5	UP,DN(C0-180)		0.0,38.8
NOMINAL FLUX(lm)	1579.4	CIE CLASS	DIRECT	UP,DN(C180-360)		0.0,31.9
LAMPS INSIDE	1	up(%)	0.0	CIBSE SHR NOM		0.50
TEST VOLTAGE(V)	120	down(%)	70.7	CIBSE SHR MAX		0.70



C Range: 0 - 360DEG  
C Interval: 30.0DEG  
Test Speed: HIGH  
Temperature:25.3℃  
Operators:zoe  
Test Date:2023-11-29

Range: 0 - 180DEG  
Interval: 1.0DEG  
Test System:EVERFINE GO-SPEX500\_V1 SYSTEM V2.00.461  
Humidity:65.0%  
Test Distance:3.160m [K=1.0000]  
Remarks: LAMP:BXRE-30G1000-A-83 Ra:90  
LENS:PM-1082B 36R  
DRIVER:PUP20A-1WMC 400mA  
30minutes warm-up

## ZONAL FLUX DIAGRAM

### ZONAL FLUX DIAGRAM:

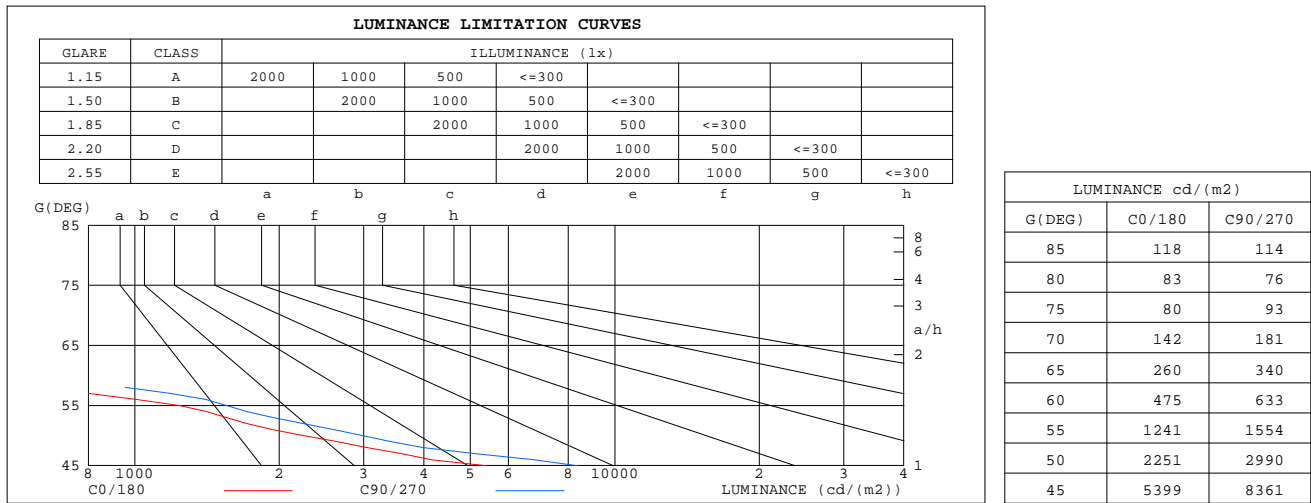
	C0	C45	C90	C135	C180	C225	C270	C315		zone	total	%lum,lamp
10	1987	2007	2010	1988	1927	1913	1906	1910	0- 10	193.0	193.0	17.3,12.2
20	1323	1433	1474	1422	1252	1172	1127	1125	10- 20	469.7	662.7	59.4,42
30	332.6	411.5	463.7	440.6	322.2	258.4	233.4	234.9	20- 30	349.0	1012	90.6,64.1
40	44.55	54.27	62.27	58.01	41.61	34.34	31.99	32.05	30- 40	87.75	1099	98.5,69.6
50	5.424	6.389	7.174	6.644	5.648	4.725	4.229	4.347	40- 50	13.99	1113	99.7,70.5
60	0.8896	1.020	1.181	1.143	0.9422	0.8206	0.7972	0.7919	50- 60	2.459	1116	99.9,70.7
70	0.1822	0.2057	0.2314	0.2273	0.1931	0.1687	0.1639	0.1547	60- 70	0.4763	1116	100,70.7
80	0.0541	0.0472	0.0496	0.0434	0.0491	0.0415	0.0474	0.0356	70- 80	0.0935	1117	100,70.7
90	0	0	0	0	0	0	0	0	80- 90	0.0322	1117	100,70.7
100	0	0	0	0	0	0	0	0	90-100	0	1117	100,70.7
110	0	0	0	0	0	0	0	0	100-110	0	1117	100,70.7
120	0	0	0	0	0	0	0	0	110-120	0	1117	100,70.7
130	0	0	0	0	0	0	0	0	120-130	0	1117	100,70.7
140	0	0	0	0	0	0	0	0	130-140	0	1117	100,70.7
150	0	0	0	0	0	0	0	0	140-150	0	1117	100,70.7
160	0	0	0	0	0	0	0	0	150-160	0	1117	100,70.7
170	0	0	0	0	0	0	0	0	160-170	0	1117	100,70.7
180	0	0	0	0	0	0	0	0	170-180	0	1117	100,70.7
DEG	LUMINOUS INTENSITY:cd									UNIT:lm		

C Range: 0 - 360DEG  
C Interval: 30.0DEG  
Test Speed: HIGH  
Temperature:25.3℃  
Operators:zoe  
Test Date:2023-11-29

Range: 0 - 180DEG  
Interval: 1.0DEG  
Test System:EVERFINE GO-SPEX500\_V1 SYSTEM V2.00.461  
Humidity:65.0%  
Test Distance:3.160m [K=1.0000]  
Remarks: LAMP:BXRE-30G1000-A-83 Ra:90  
LENS:PM-1082B 36R  
DRIVER:PUP20A-1WMC 400mA  
30minutes warm-up

## LUMINANCE LIMITATION CURVES

Test:U:120.14V I:0.1325A P:15.808W PF:0.9920 Freq:59.98Hz Lamp Flux:1579.4x1 lm		
NAME: 2318.110-LEA-14(400mA)	TYPE:	WEIGHT:
SPEC.: 3000K	DIM.:	SERIAL No.: 2311291399
MFR.: RISE	SUR.: 0.003737385m2	Shielding Angle:



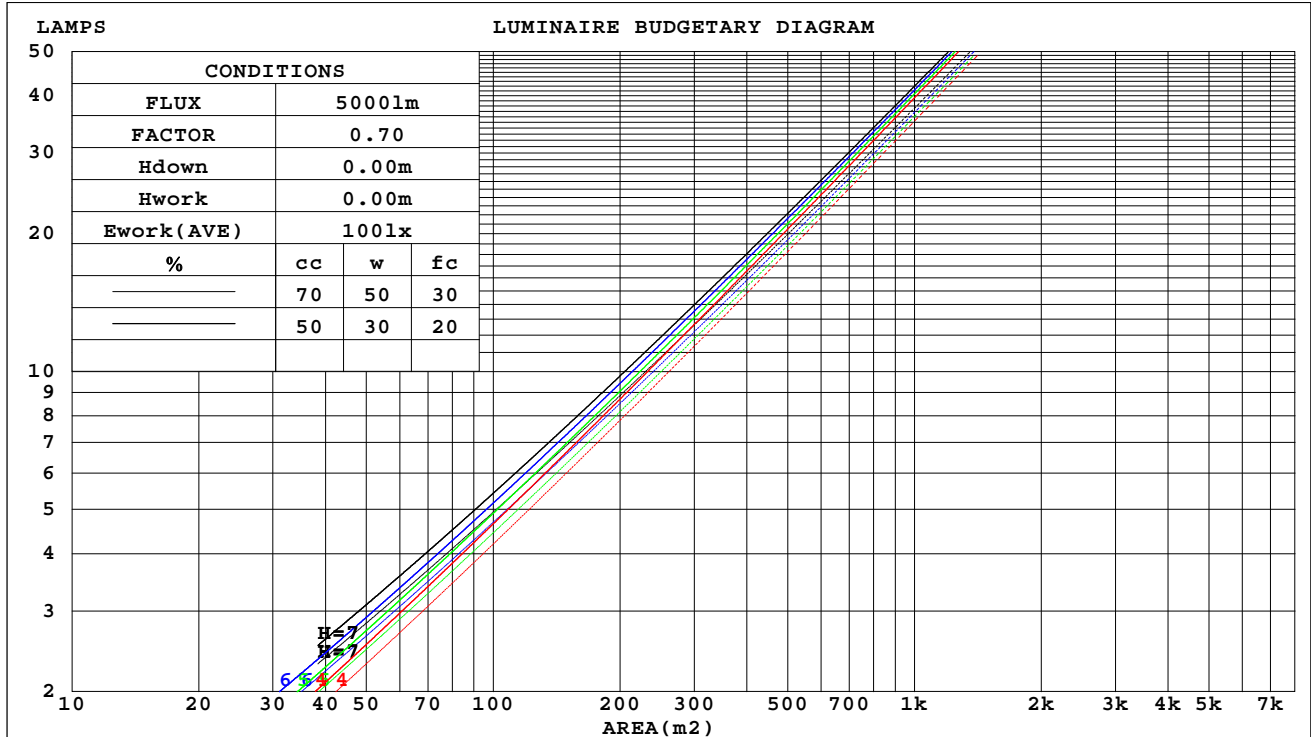
C Range: 0 - 360DEG  
C Interval: 30.0DEG  
Test Speed: HIGH  
Temperature:25.3℃  
Operators:zoe  
Test Date:2023-11-29

Range: 0 - 180DEG  
Interval: 1.0DEG  
Test System:EVERFINE GO-SPEX500\_V1 SYSTEM V2.00.461  
Humidity:65.0%  
Test Distance:3.160m [K=1.0000]  
Remarks: LAMP:BXRE-30G1000-A-83 Ra:90  
LENS:PM-1082B 36R  
DRIVER:PUP20A-1WMC 400mA  
30minutes warm-up

## CU AND LUMINAIRE BUDGETARY ESTIMATE DIAGRAM

Test:U:120.14V I:0.1325A P:15.808W PF:0.9920 Freq:59.98Hz Lamp Flux:1579.4x1 lm		
NAME: 2318.110-LEA-14(400mA)	TYPE:	WEIGHT:
SPEC.: 3000K	DIM.:	SERIAL No.: 2311291399
MFR.: RISE	SUR.: 0.003737385m2	Shielding Angle:

cc	80%			70%			50%			30%			10%			0
w	50%	30%	10%	50%	30%	10%	50%	30%	10%	50%	30%	10%	50%	30%	10%	0
fc	20%			20%			20%			20%			20%			0
RCR	RCR:Room Cavity Ratio			Coefficients of Utilization(CU)												
0.0	.84	.84	.84	.82	.82	.82	.79	.79	.79	.75	.75	.75	.72	.72	.72	.71
1.0	.79	.78	.76	.78	.76	.75	.75	.74	.73	.72	.71	.71	.70	.69	.69	.67
2.0	.75	.72	.70	.73	.71	.69	.71	.69	.68	.69	.68	.66	.67	.66	.65	.64
3.0	.71	.68	.65	.70	.67	.65	.68	.66	.64	.66	.64	.63	.65	.63	.62	.61
4.0	.67	.64	.61	.66	.63	.61	.65	.62	.60	.63	.61	.60	.62	.60	.59	.58
5.0	.64	.60	.58	.63	.60	.58	.62	.59	.57	.61	.58	.57	.60	.58	.56	.55
6.0	.61	.57	.55	.60	.57	.55	.59	.56	.54	.58	.56	.54	.57	.55	.53	.53
7.0	.58	.54	.52	.58	.54	.52	.57	.54	.52	.56	.53	.51	.55	.53	.51	.50
8.0	.55	.52	.49	.55	.52	.49	.54	.51	.49	.54	.51	.49	.53	.51	.49	.48
9.0	.53	.50	.47	.53	.49	.47	.52	.49	.47	.52	.49	.47	.51	.49	.47	.46
10.0	.51	.47	.45	.51	.47	.45	.50	.47	.45	.50	.47	.45	.49	.47	.45	.44



C Range: 0 - 360DEG  
C Interval: 30.0DEG  
Test Speed: HIGH  
Temperature:25.3℃  
Operators:zoe  
Test Date:2023-11-29

Range: 0 - 180DEG  
Interval: 1.0DEG  
Test System:EVERFINE GO-SPEX500\_V1 SYSTEM V2.00.461  
Humidity:65.0%  
Test Distance:3.160m [K=1.0000]  
Remarks: LAMP:BXRE-30G1000-A-83 Ra:90  
LENS:PM-1082B 36R  
DRIVER:PUP20A-1WMC 400mA  
30minutes warm-up

### WEC AND CCEC

Test:U:120.14V I:0.1325A P:15.808W PF:0.9920 Freq:59.98Hz Lamp Flux:1579.4x1 lm		
NAME: 2318.110-LEA-14(400mA)	TYPE:	WEIGHT:
SPEC.: 3000K	DIM.:	SERIAL No.: 2311291399
MFR.: RISE	SUR.: 0.003737385m2	Shielding Angle:

cc	80%			70%			50%			30%			10%			0
w	50%	30%	10%	50%	30%	10%	50%	30%	10%	50%	30%	10%	50%	30%	10%	0
fc	20%			20%			20%			20%			20%			0
RCR	RCR:Room Cavity Ratio						Wall Exitance Coefficients(WEC)									
0.0																
1.0	.110	.062	.020	.105	.060	.019	.096	.055	.018	.088	.051	.016	.081	.047	.015	
2.0	.103	.057	.017	.099	.055	.017	.092	.051	.016	.085	.048	.015	.079	.045	.014	
3.0	.098	.052	.016	.094	.050	.015	.088	.048	.015	.082	.045	.014	.077	.043	.013	
4.0	.092	.048	.014	.090	.047	.014	.084	.045	.013	.079	.043	.013	.075	.041	.012	
5.0	.088	.045	.013	.086	.044	.013	.081	.042	.012	.077	.040	.012	.073	.039	.012	
6.0	.084	.042	.012	.082	.041	.012	.078	.040	.012	.074	.039	.011	.071	.037	.011	
7.0	.080	.040	.011	.078	.039	.011	.075	.038	.011	.072	.037	.011	.069	.036	.010	
8.0	.077	.038	.011	.075	.037	.010	.072	.036	.010	.069	.035	.010	.067	.034	.010	
9.0	.074	.036	.010	.072	.035	.010	.070	.034	.010	.067	.034	.010	.065	.033	.009	
10.0	.071	.034	.009	.070	.034	.009	.067	.033	.009	.065	.032	.009	.063	.032	.009	

cc	80%			70%			50%			30%			10%			0
w	50%	30%	10%	50%	30%	10%	50%	30%	10%	50%	30%	10%	50%	30%	10%	0
fc	20%			20%			20%			20%			20%			0
RCR	RCR:Room Cavity Ratio						Ceiling Cavity Exitance Coefficients(CCEC)									
0.0	.135	.135	.135	.115	.115	.115	.079	.079	.079	.045	.045	.045	.014	.014	.014	
1.0	.120	.111	.104	.103	.096	.089	.070	.066	.062	.040	.038	.036	.013	.012	.012	
2.0	.108	.094	.082	.093	.081	.071	.063	.056	.049	.037	.032	.029	.012	.011	.009	
3.0	.098	.080	.066	.084	.069	.057	.058	.048	.040	.033	.028	.024	.011	.009	.008	
4.0	.090	.070	.054	.077	.060	.047	.053	.042	.033	.031	.025	.019	.010	.008	.006	
5.0	.084	.061	.044	.072	.053	.039	.049	.037	.027	.029	.022	.016	.009	.007	.005	
6.0	.078	.054	.037	.067	.047	.033	.046	.033	.023	.027	.019	.014	.009	.006	.005	
7.0	.073	.049	.032	.063	.042	.028	.043	.030	.020	.025	.017	.012	.008	.006	.004	
8.0	.069	.044	.027	.059	.038	.024	.041	.027	.017	.024	.016	.010	.008	.005	.003	
9.0	.065	.040	.024	.056	.035	.021	.039	.025	.015	.023	.015	.009	.007	.005	.003	
10.0	.062	.037	.021	.053	.032	.018	.037	.023	.013	.022	.013	.008	.007	.004	.003	

C Range: 0 - 360DEG  
C Interval: 30.0DEG  
Test Speed: HIGH  
Temperature:25.3℃  
Operators:zoe  
Test Date:2023-11-29

Range: 0 - 180DEG  
Interval: 1.0DEG  
Test System:EVERFINE GO-SPEX500\_V1 SYSTEM V2.00.461  
Humidity:65.0%  
Test Distance:3.160m [K=1.0000]  
Remarks: LAMP:BXRE-30G1000-A-83 Ra:90  
LENS:PM-1082B 36R  
DRIVER:PUP20A-1WMC 400mA  
30minutes warm-up

## UGR(Unified Glare Rating) Table

Test:U:120.14V I:0.1325A P:15.808W PF:0.9920 Freq:59.98Hz Lamp Flux:1579.4x1 lm										
NAME: 2318.110-LEA-14(400mA)					TYPE:			WEIGHT:		
SPEC.: 3000K					DIM.:			SERIAL No.: 2311291399		
MFR.: RISE					SUR.: 0.003737385m2			Shielding Angle:		
ceiling/cavity	0.7	0.7	0.5	0.5	0.3	0.7	0.7	0.5	0.5	0.3
walls	0.5	0.3	0.5	0.3	0.3	0.5	0.3	0.5	0.3	0.3
working plane	0.2	0.2	0.2	0.2	0.2	0.2	0.2	0.2	0.2	0.2
Room dimensions	Viewed crosswise					Viewed endwise				
x = 2H y = 2H	11.8	12.6	12.0	12.7	12.9	13.4	14.2	13.6	14.3	14.5
3H	11.6	12.3	11.9	12.5	12.7	13.2	13.9	13.5	14.1	14.3
4H	11.5	12.2	11.8	12.4	12.6	13.1	13.8	13.4	14.0	14.2
6H	11.4	12.1	11.7	12.3	12.6	13.0	13.7	13.3	13.9	14.2
8H	11.4	12.0	11.7	12.3	12.5	13.0	13.6	13.3	13.9	14.1
12H	11.4	11.9	11.7	12.2	12.5	13.0	13.6	13.3	13.8	14.1
4H 2H	11.5	12.2	11.8	12.4	12.6	13.1	13.8	13.4	14.0	14.3
3H	11.4	12.0	11.7	12.2	12.5	13.0	13.6	13.3	13.8	14.1
4H	11.3	11.8	11.6	12.1	12.4	12.9	13.4	13.2	13.7	14.0
6H	11.2	11.6	11.5	12.0	12.3	12.8	13.2	13.1	13.6	13.9
8H	11.1	11.6	11.5	11.9	12.3	12.7	13.2	13.1	13.5	13.9
12H	11.1	11.5	11.5	11.8	12.2	12.7	13.1	13.1	13.4	13.8
8H 4H	11.1	11.6	11.5	11.9	12.3	12.7	13.2	13.1	13.5	13.9
6H	11.0	11.4	11.4	11.8	12.2	12.6	13.0	13.0	13.4	13.8
8H	10.9	11.3	11.4	11.7	12.1	12.5	12.9	13.0	13.3	13.7
12H	10.9	11.2	11.3	11.6	12.1	12.5	12.8	12.9	13.2	13.7
12H 4H	11.1	11.5	11.5	11.8	12.2	12.7	13.1	13.1	13.4	13.8
6H	10.9	11.3	11.4	11.7	12.1	12.5	12.9	13.0	13.3	13.7
8H	10.9	11.2	11.3	11.6	12.1	12.5	12.8	12.9	13.2	13.7
Variations with the observer position at spacings(CIE Pub.117):										
S = 1.0H	+ 3.5 / -15.8					+ 4.2 / -15.6				
1.5H	+ 6.0 / -11.3					+ 6.7 / -12.1				
2.0H	+ 6.5 / -10.0					+ 7.5 / -11.2				

CIE Pub.117, 1579 lm Total Lamp Luminous Flux Correct (8log(F/F0) = 1.6)  
Area: 0.00373738 m2

C Range: 0 - 360DEG  
C Interval: 30.0DEG  
Test Speed: HIGH  
Temperature:25.3℃  
Operators:zoe  
Test Date:2023-11-29

Range: 0 - 180DEG  
Interval: 1.0DEG  
Test System:EVERFINE GO-SPEX500\_V1 SYSTEM V2.00.461  
Humidity:65.0%  
Test Distance:3.160m [K=1.0000]  
Remarks: LAMP:BXRE-30G1000-A-83 Ra:90  
LENS:PM-1082B 36R  
DRIVER:PUP20A-1WMC 400mA  
30minutes warm-up



### UTILIZATION FACTORS TABLE

Test:U:120.14V I:0.1325A P:15.808W PF:0.9920 Freq:59.98Hz Lamp Flux:1579.4x1 lm		
NAME: 2318.110-LEA-14(400mA)	TYPE:	WEIGHT:
SPEC.: 3000K	DIM.:	SERIAL No.: 2311291399
MFR.: RISE	SUR.: 0.003737385m2	Shielding Angle:

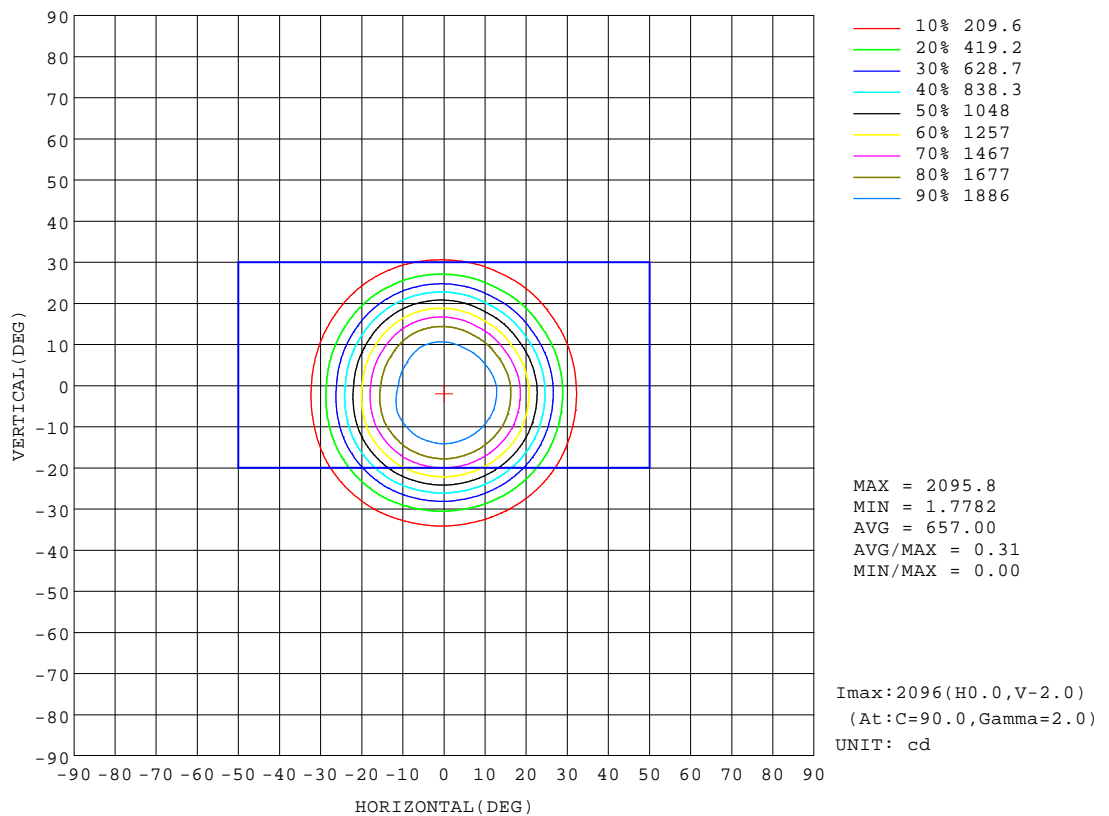
REFLECTANCE										
Ceiling	0.8	0.8	0.8	0.7	0.7	0.7	0.5	0.5	0.5	0
Walls	0.7	0.5	0.3	0.7	0.5	0.3	0.7	0.5	0.3	0
Working plane	0.2	0.2	0.2	0.2	0.2	0.2	0.2	0.2	0.2	0
ROOM INDEX	UTILIZATION FACTORS(PERCENT) $k(RI) \times RCR = 5$									
k = 0.60	64	60	58	64	60	57	63	60	57	55
0.80	69	65	63	69	65	63	68	65	63	60
1.00	72	68	66	71	68	66	70	68	65	63
1.25	74	71	69	74	71	68	72	70	68	65
1.50	76	73	71	75	72	71	74	71	70	67
2.00	78	75	73	77	74	72	75	73	71	68
2.50	79	76	74	78	75	74	75	74	72	68
3.00	80	77	76	78	76	75	76	75	73	69
4.00	81	79	78	79	78	77	77	76	75	70
5.00	82	80	79	80	79	78	78	77	76	71
ROOM INDEX	UF(total)									Direct
According to DIN EN 13032-2 2004			Suspended					SHRNOM = 1.25		

C Range: 0 - 360DEG  
C Interval: 30.0DEG  
Test Speed: HIGH  
Temperature:25.3℃  
Operators:zoe  
Test Date:2023-11-29

Range: 0 - 180DEG  
Interval: 1.0DEG  
Test System:EVERFINE GO-SPEX500\_V1 SYSTEM V2.00.461  
Humidity:65.0%  
Test Distance:3.160m [K=1.0000]  
Remarks: LAMP:BXRE-30G1000-A-83 Ra:90  
LENS:PM-1082B 36R  
DRIVER:PUP20A-1WMC 400mA  
30minutes warm-up

## ISOCANDELA DIAGRAM

Test:U:120.14V I:0.1325A P:15.808W PF:0.9920 Freq:59.98Hz Lamp Flux:1579.4x1 lm		
NAME: 2318.110-LEA-14(400mA)	TYPE:	WEIGHT:
SPEC.: 3000K	DIM.:	SERIAL No.: 2311291399
MFR.: RISE	SUR.: 0.003737385m2	Shielding Angle:

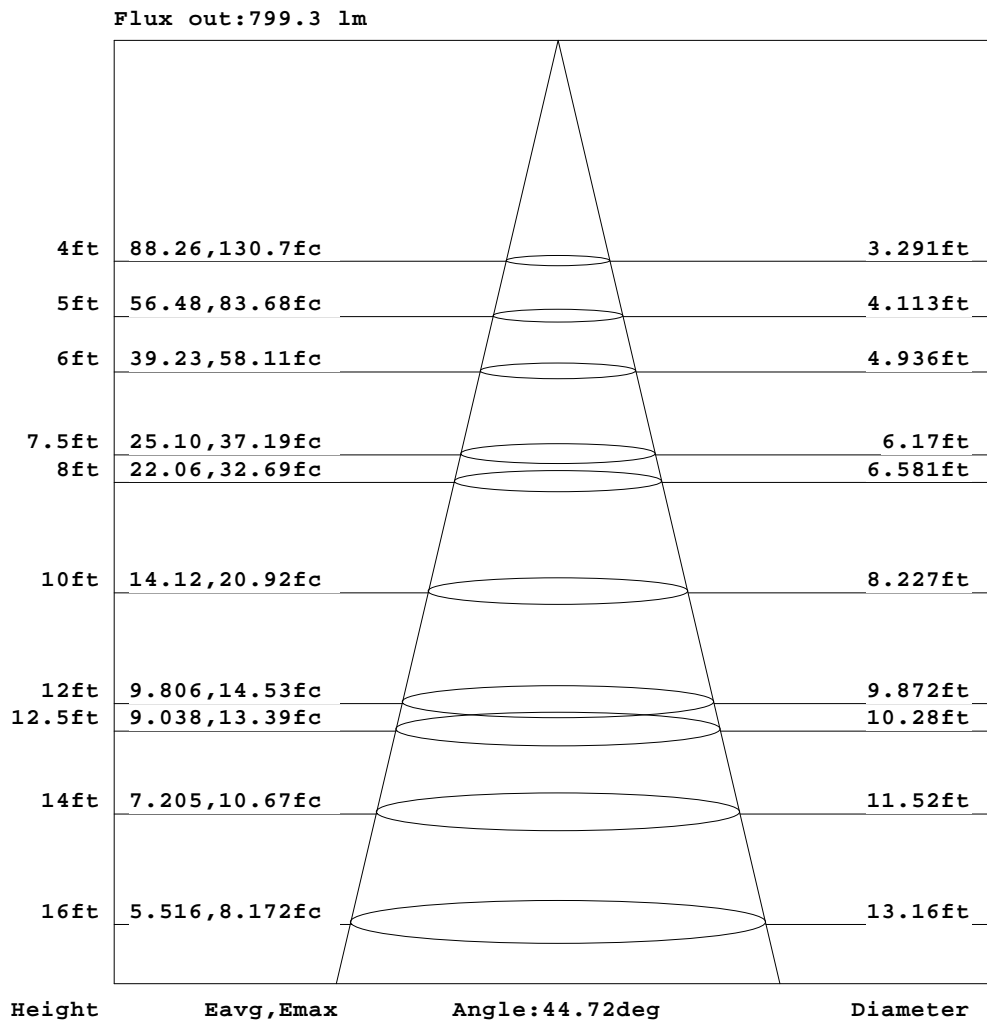


C Range: 0 - 360DEG  
C Interval: 30.0DEG  
Test Speed: HIGH  
Temperature:25.3℃  
Operators:zoe  
Test Date:2023-11-29

Range: 0 - 180DEG  
Interval: 1.0DEG  
Test System:EVERFINE GO-SPEX500\_V1 SYSTEM V2.00.461  
Humidity:65.0%  
Test Distance:3.160m [K=1.0000]  
Remarks: LAMP:BXRE-30G1000-A-83 Ra:90  
LENS:PM-1082B 36R  
DRIVER:PUP20A-1WMC 400mA  
30minutes warm-up

## AAI Figure

Test:U:120.14V I:0.1325A P:15.808W PF:0.9920 Freq:59.98Hz Lamp Flux:1579.4x1 lm		
NAME: 2318.110-LEA-14(400mA)	TYPE:	WEIGHT:
SPEC.: 3000K	DIM.:	SERIAL No.: 2311291399
MFR.: RISE	SUR.: 0.003737385m2	Shielding Angle:



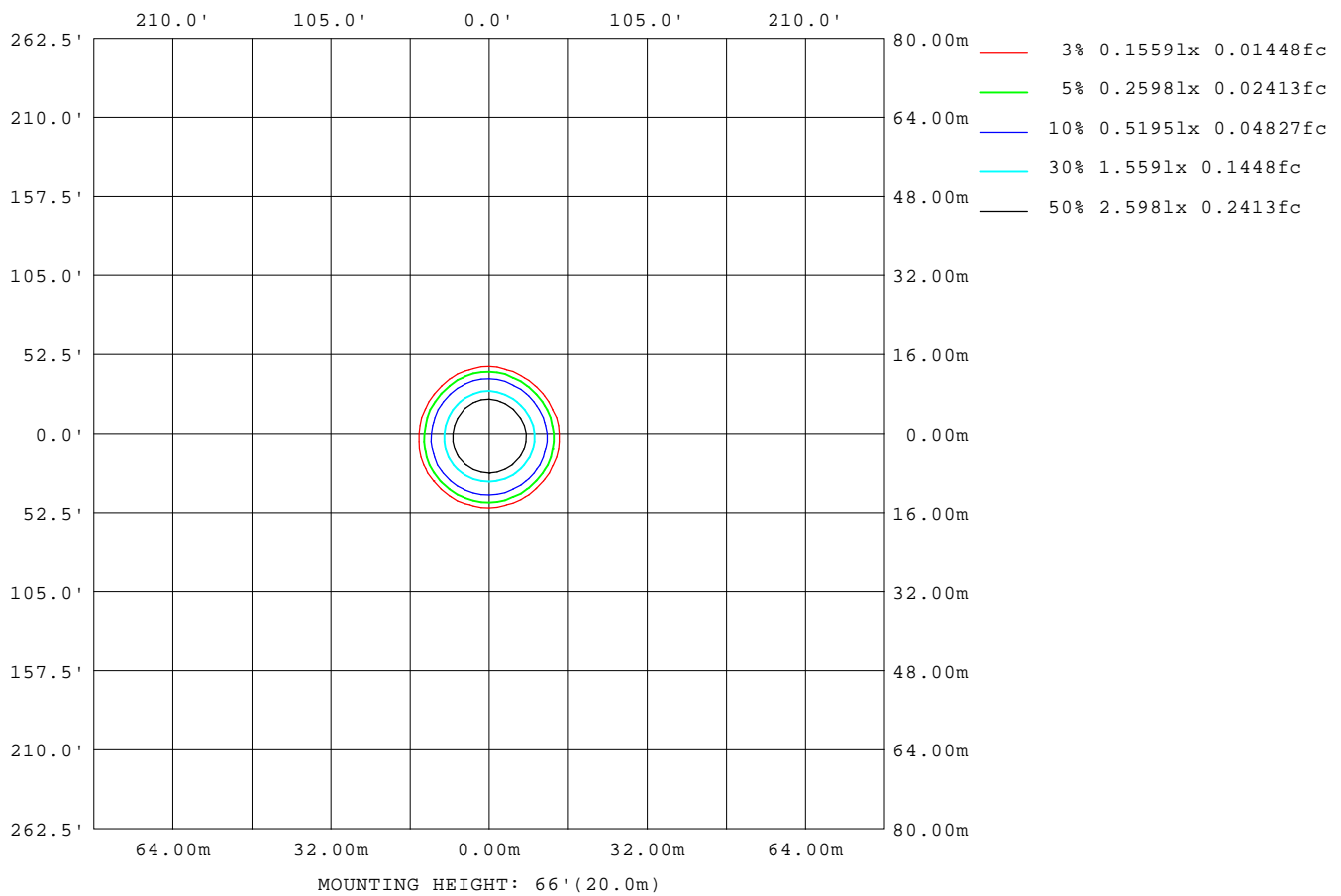
Note: The Curves indicate the illuminated area and the average illumination when the luminaire is at different distance.

C Range: 0 - 360DEG  
C Interval: 30.0DEG  
Test Speed: HIGH  
Temperature: 25.3°C  
Operators: zoe  
Test Date: 2023-11-29

Range: 0 - 180DEG  
Interval: 1.0DEG  
Test System: EVERFINE GO-SPEX500\_V1 SYSTEM V2.00.461  
Humidity: 65.0%  
Test Distance: 3.160m [K=1.0000]  
Remarks: LAMP: BXRE-30G1000-A-83 Ra: 90  
LENS: PM-1082B 36R  
DRIVER: PUP20A-1WMC 400mA  
30minutes warm-up

## ISOLUX DIAGRAM

Test:U:120.14V I:0.1325A P:15.808W PF:0.9920 Freq:59.98Hz Lamp Flux:1579.4x1 lm		
NAME: 2318.110-LEA-14(400mA)	TYPE:	WEIGHT:
SPEC.: 3000K	DIM.:	SERIAL No.: 2311291399
MFR.: RISE	SUR.: 0.003737385m2	Shielding Angle:



C Range: 0 - 360DEG  
C Interval: 30.0DEG  
Test Speed: HIGH  
Temperature:25.3°C  
Operators:zoe  
Test Date:2023-11-29

Range: 0 - 180DEG  
Interval: 1.0DEG  
Test System:EVERFINE GO-SPEX500\_V1 SYSTEM V2.00.461  
Humidity:65.0%  
Test Distance:3.160m [K=1.0000]  
Remarks: LAMP:BXRE-30G1000-A-83 Ra:90  
LENS:PM-1082B 36R  
DRIVER:PUP20A-1WMC 400mA  
30minutes warm-up

## LED Avg.L Report

Test:U:120.14V I:0.1325A P:15.808W PF:0.9920 Freq:59.98Hz Lamp Flux:1579.4x1 lm		
NAME: 2318.110-LEA-14(400mA)	TYPE:	WEIGHT:
SPEC.: 3000K	DIM.:	SERIAL No.: 2311291399
MFR.: RISE	SUR.: 0.003737385m2	Shielding Angle:

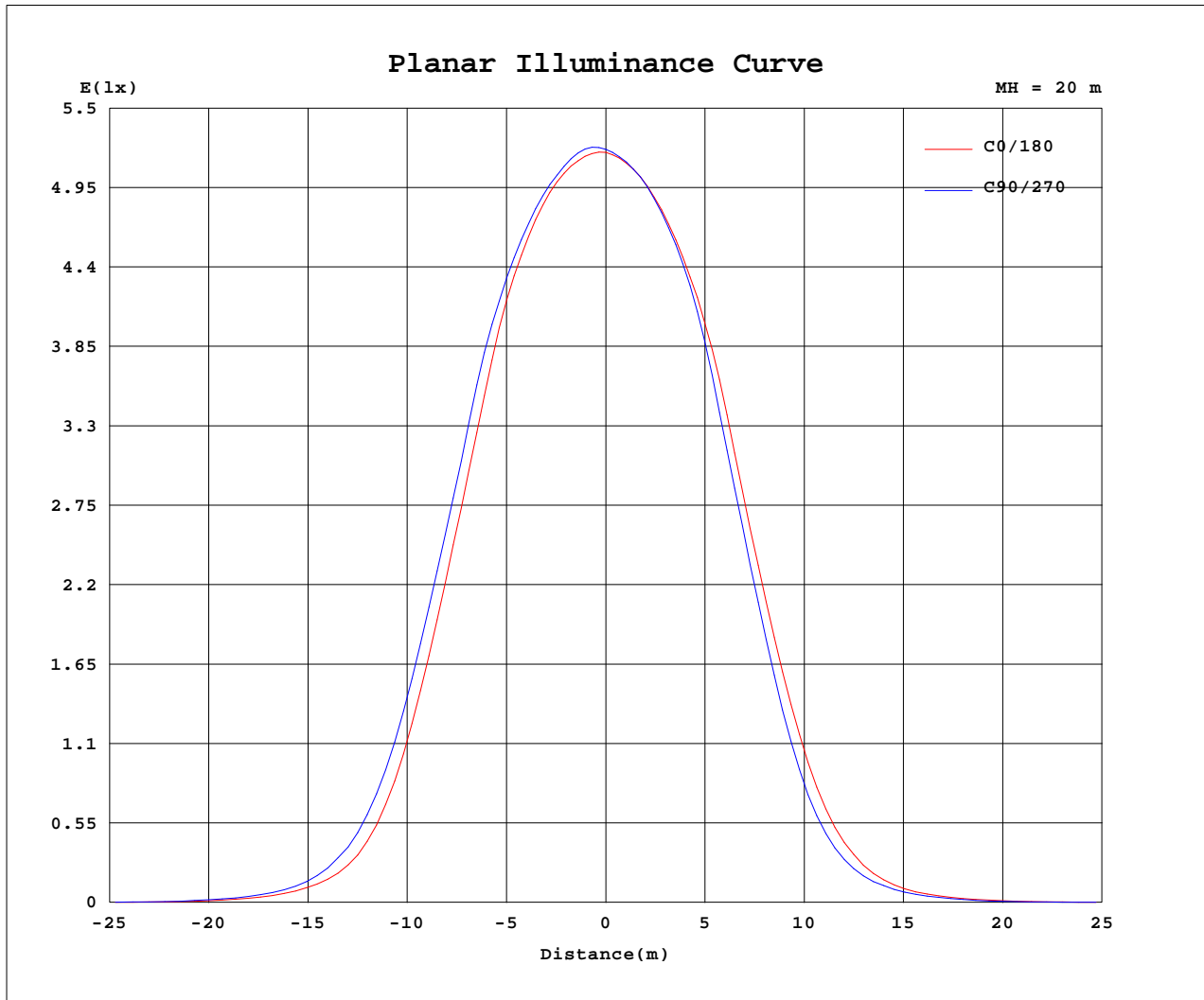
AvgL	cd/m2
L_0~180(65)av	276
L_0~180(75)av	77
L_0~180(85)av	115
L_90~270(65)av	292
L_90~270(75)av	77
L_90~270(85)av	109
L_45(65)av	280
L_45(75)av	72
L_45(85)av	80

Standard: GB/T 29293-2012

C Range: 0 - 360DEG  
C Interval: 30.0DEG  
Test Speed: HIGH  
Temperature:25.3℃  
Operators:zoe  
Test Date:2023-11-29

Range: 0 - 180DEG  
Interval: 1.0DEG  
Test System:EVERFINE GO-SPEX500\_V1 SYSTEM V2.00.461  
Humidity:65.0%  
Test Distance:3.160m [K=1.0000]  
Remarks: LAMP:BXRE-30G1000-A-83 Ra:90  
LENS:PM-1082B 36R  
DRIVER:PUP20A-1WMC 400mA  
30minutes warm-up

## Planar Illuminance Curve



C Range: 0 - 360DEG  
 C Interval: 30.0DEG  
 Test Speed: HIGH  
 Temperature: 25.3 °C  
 Operators: zoe  
 Test Date: 2023-11-29

Range: 0 - 180DEG  
 Interval: 1.0DEG  
 Test System: EVERFINE GO-SPEX500\_V1 SYSTEM V2.00.461  
 Humidity: 65.0%  
 Test Distance: 3.160m [K=1.0000]  
 Remarks: LAMP: BXRE-30G1000-A-83 Ra:90  
 LENS: PM-1082B 36R  
 DRIVER: PUP20A-1WMC 400mA  
 30minutes warm-up



## LUMINOUS DISTRIBUTION INTENSITY DATA

Test:U:120.14V I:0.1325A P:15.808W PF:0.9920 Freq:59.98Hz Lamp Flux:1579.4x1 lm		
NAME: 2318.110-LEA-14(400mA)	TYPE:	WEIGHT:
SPEC.: 3000K	DIM.:	SERIAL No.: 2311291399
MFR.: RISE	SUR.: 0.003737385m2	Shielding Angle:

Table--1

UNIT: cd

C(DEG) (DEG)	0	30	60	90	120	150	180	210	240	270	300	330						
0	2084	2084	2084	2084	2084	2084	2084	2084	2084	2084	2084	2084						
5	2070	2082	2078	2081	2080	2062	2039	2028	2032	2031	2029	2041						
10	1987	2009	2005	2010	2001	1976	1927	1910	1916	1906	1897	1923						
15	1772	1828	1833	1847	1839	1797	1705	1660	1647	1619	1599	1651						
20	1323	1418	1447	1474	1459	1385	1252	1182	1162	1127	1091	1159						
25	792	885	927	962	958	881	740	663	627	599	571	629						
30	333	393	430	464	466	415	322	271	246	233	223	247						
35	118	138	156	174	175	153	115	94.0	88.8	85.7	78.6	90.6						
40	44.5	51.2	57.3	62.3	61.9	54.1	41.6	34.9	33.7	32.0	29.7	34.4						
45	14.3	17.9	20.3	22.1	21.5	19.3	14.8	12.3	10.1	10.2	8.67	10.6						
50	5.42	6.05	6.73	7.17	6.75	6.54	5.65	5.03	4.42	4.23	4.05	4.65						
55	2.67	2.77	3.08	3.33	3.30	2.97	2.76	2.44	2.19	2.11	1.95	2.23						
60	0.89	0.95	1.09	1.18	1.21	1.07	0.94	0.85	0.79	0.80	0.77	0.81						
65	0.41	0.44	0.50	0.54	0.55	0.51	0.46	0.41	0.38	0.39	0.36	0.38						
70	0.18	0.19	0.22	0.23	0.24	0.22	0.19	0.18	0.16	0.16	0.15	0.16						
75	0.08	0.08	0.09	0.09	0.09	0.08	0.07	0.07	0.06	0.06	0.05	0.05						
80	0.05	0.05	0.05	0.05	0.05	0.04	0.05	0.04	0.04	0.05	0.03	0.04						
85	0.04	0.03	0.03	0.04	0.03	0.02	0.04	0.03	0.03	0.03	0.02	0.02						
90	0.00	0.00	0.00	0.00	0.00	0.00	0.00	0.00	0.00	0.00	0.00	0.00						
95	0.00	0.00	0.00	0.00	0.00	0.00	0.00	0.00	0.00	0.00	0.00	0.00						
100	0.00	0.00	0.00	0.00	0.00	0.00	0.00	0.00	0.00	0.00	0.00	0.00						
105	0.00	0.00	0.00	0.00	0.00	0.00	0.00	0.00	0.00	0.00	0.00	0.00						
110	0.00	0.00	0.00	0.00	0.00	0.00	0.00	0.00	0.00	0.00	0.00	0.00						
115	0.00	0.00	0.00	0.00	0.00	0.00	0.00	0.00	0.00	0.00	0.00	0.00						
120	0.00	0.00	0.00	0.00	0.00	0.00	0.00	0.00	0.00	0.00	0.00	0.00						
125	0.00	0.00	0.00	0.00	0.00	0.00	0.00	0.00	0.00	0.00	0.00	0.00						
130	0.00	0.00	0.00	0.00	0.00	0.00	0.00	0.00	0.00	0.00	0.00	0.00						
135	0.00	0.00	0.00	0.00	0.00	0.00	0.00	0.00	0.00	0.00	0.00	0.00						
140	0.00	0.00	0.00	0.00	0.00	0.00	0.00	0.00	0.00	0.00	0.00	0.00						
145	0.00	0.00	0.00	0.00	0.00	0.00	0.00	0.00	0.00	0.00	0.00	0.00						
150	0.00	0.00	0.00	0.00	0.00	0.00	0.00	0.00	0.00	0.00	0.00	0.00						
155	0.00	0.00	0.00	0.00	0.00	0.00	0.00	0.00	0.00	0.00	0.00	0.00						
160	0.00	0.00	0.00	0.00	0.00	0.00	0.00	0.00	0.00	0.00	0.00	0.00						
165	0.00	0.00	0.00	0.00	0.00	0.00	0.00	0.00	0.00	0.00	0.00	0.00						
170	0.00	0.00	0.00	0.00	0.00	0.00	0.00	0.00	0.00	0.00	0.00	0.00						
175	0.00	0.00	0.00	0.00	0.00	0.00	0.00	0.00	0.00	0.00	0.00	0.00						
180	0.00	0.00	0.00	0.00	0.00	0.00	0.00	0.00	0.00	0.00	0.00	0.00						

C Range: 0 - 360DEG  
C Interval: 30.0DEG  
Test Speed: HIGH  
Temperature:25.3℃  
Operators:zoe  
Test Date:2023-11-29

Range: 0 - 180DEG  
Interval: 1.0DEG  
Test System:EVERFINE GO-SPEX500\_V1 SYSTEM V2.00.461  
Humidity:65.0%  
Test Distance:3.160m [K=1.0000]  
Remarks: LAMP:BXRE-30G1000-A-83 Ra:90  
LENS:PM-1082B 36R  
DRIVER:PUP20A-1WMC 400mA  
30minutes warm-up